

COMPANY
PROFILE

TABLE OF CONTENTS

ABOUT US	3
OUR MISSION & VISION	4
OUR SERVICES	5
WHY US OUR	6
WORK	7
COMPLETED PROJECTS	8
ONGOING PROJECTS	16
DIRECTORS COMPLIANCE	43
OUR PARTNERS	44
	45

ABOUT US

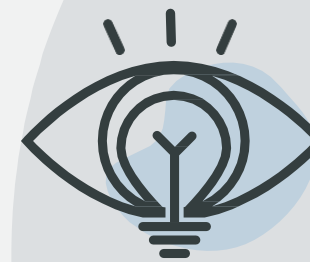
SPEQ Consulting Limited is a Kenyan owned company that was established in 2017 to provide consulting services in the field of Project Management and Quantity Surveying. We have since added two more departments which includes Development Management and Contract Management. This is in line with the dynamic trends of the Real estate and the property market in Kenya. Our experience cuts across the different sectors of the economy from Industrial, residential, retail, hospitality, and office development.

OUR MISSION



SPEQ Consulting is dedicated to delivering effective, efficient, respectful public service with Integrity and accountability, using both proven and innovative methods.

OUR VISION



Our Vision is to always strive to be the #1 Consulting Firm in East And Central Africa, and to help our Team members become the best that they can be, by providing our Clients with the respect and Service they deserve, and the results they expect.

OUR SERVICES

- o Quantity Surveying
- o Project Management
- o Contract Management
- o Development Management

We have since added two more departments which includes Development Management and Contract Management. This is in line with the dynamic trends of the Real estate and the property market in Kenya.

Our experience cuts across the different sectors of the economy from Industrial, residential, retail, hospitality, and office development.

WHY US

We have embraced use of IT in majority of services and have specialized software for estimating, measurements, bills of quantities, measurements and productions, project programs, Expenditure/cash-flow, and CAD programs.

We have extensive experience working in Nairobi and regionally and we have a full understanding of the working culture, risks, and opportunities.

We are well conversant with the Kenyan market including working with contractors and suppliers to achieve the highest quality during construction and minimising defects on completion, to successfully achieving a smooth handover to a fully operational building.

Registration

SPEQ is a legally registered Kenyan company. We are registered members of the Board of Architects and Quantity Surveyors.

Our Value for Money

Our attitude towards all projects is simply that we always endeavor to save the client more money than the amount we get paid for in fees. This is done by continuous advice and option costing on more cost-effective alternatives by carrying out value engineering exercises, standardization when appropriate, negotiation with

OUR WORK

At SPEQ, we specialize in delivering precise and comprehensive quantity surveying services tailored to meet the needs of construction projects of all sizes. Our expertise lies in cost management, project estimation, and financial planning, ensuring that every phase of your project is executed with accuracy and efficiency.

With a strong commitment to transparency and value-driven solutions, SPEQ helps clients maximize their budgets while maintaining the highest standards of quality and compliance. Whether it's cost control, procurement advice, or risk management, we are your trusted partner from concept to completion.

COMPLETED PROJECTS

BASIC KILELESHWA QUICKMART

This project that involves the construction of a convenience mini-mall situated along Mander Road in Kileleshwa, Nairobi marks a significant milestone in enhancing local retail offerings. The project is complete and not only aims to meet the needs of the community but also establishes a vibrant shopping hub anchored by Quickmart Supermarket, among other retail hubs, restaurants and shopping entities. We are proud having seen this project to fruition.

**The Project Team:**

Architect – Boogertman & Partners Architects QS – SPEQ
Consulting Limited

Civil & Structural Eng – Civil Engineering Design (CED) Contractor –
Kayvee Construction Limited



BROADWALK MALL

OJIJO ROAD

The project is a premier destination mall built to serve shopping centers, dining franchises and entertainment joints. Nestled conveniently between Ojijo Road and Muthithi Road, Broadwalk Mall is designed to be a vibrant hub that caters to diverse tastes and interests, making it the perfect one-stop-shop for everything

new and exciting.

The Project Team:

Architect; Design works / Simple Architects QS; SPEQ Consulting Limited
MEP: ARAW designs Limited Structural; Integrated Metrix Limited



SAFARI CENTRE

NAIVASHA

Safari Centre is a vibrant shopping and entertainment hub strategically located along the A104 (Nairobi-Naivasha) highway. Designed to serve as a convenient stopover for travelers and a lively marketplace for locals. The project combines modern amenities with a unique cultural

experience, making it a must-visit destination for shoppers and explorers alike.



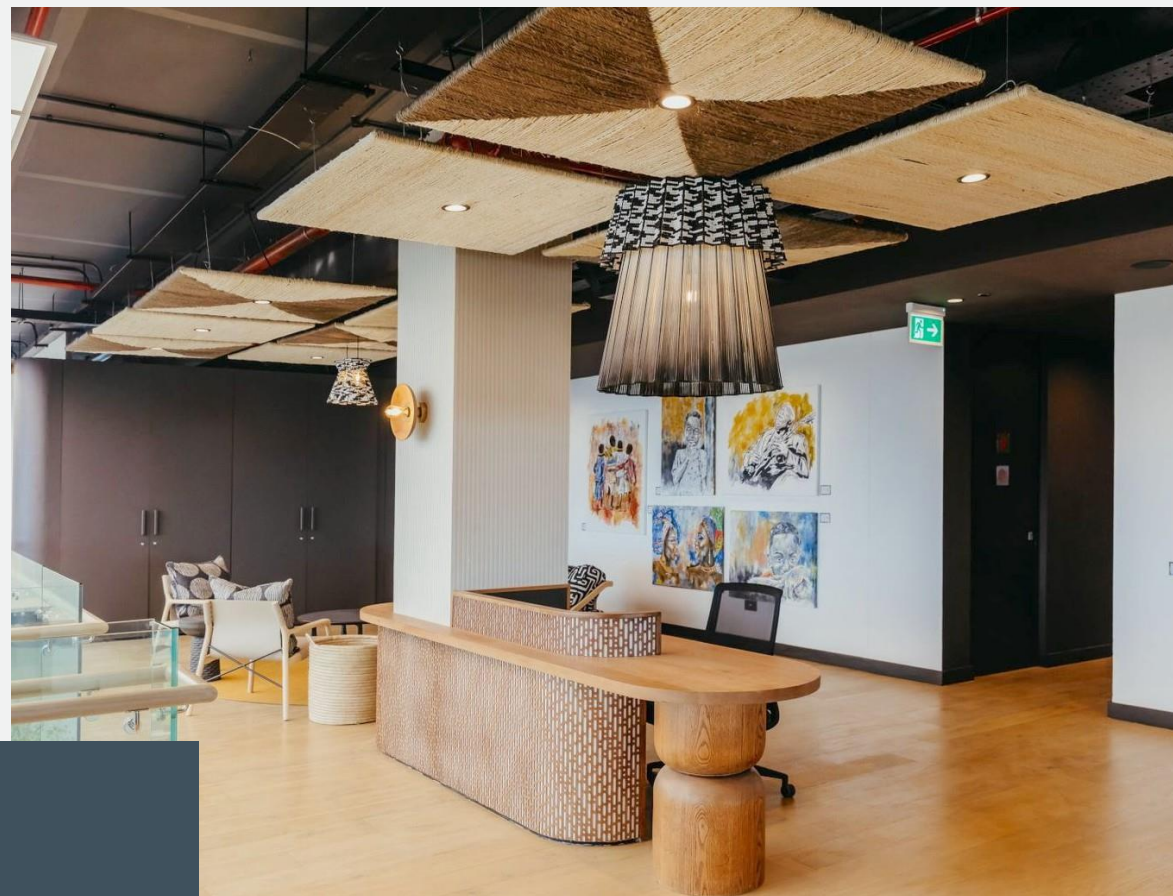
The Project Team:

Architect; Tecutura International Limited QS; SPEQ Consulting Limited
Structural; Integrated Metrix Limited
Contractor; Gokul Builders Limited Services;
Lotus and partners



CCI TATU CITY

This project involves the design and implementation of an office fit-out on the 4th floor of the CCI Building at Tatu City, tailored for CCI Kenya SEZ Limited. The fit-out aims to create a modern, functional workspace that enhances employee productivity and collaboration while reflecting the company's brand identity.



The Project Team:

Architect; Munkh Architecture + Design QS; SPEQ Consulting Limited Contractor; Stonehenge Kenya Limited Electrical Sub; Luxury levels Limited HVAC Sub; Air Alliance Company Limited

COMPANY PROFILE



COMPLETED PROJECTS

MUHOYA

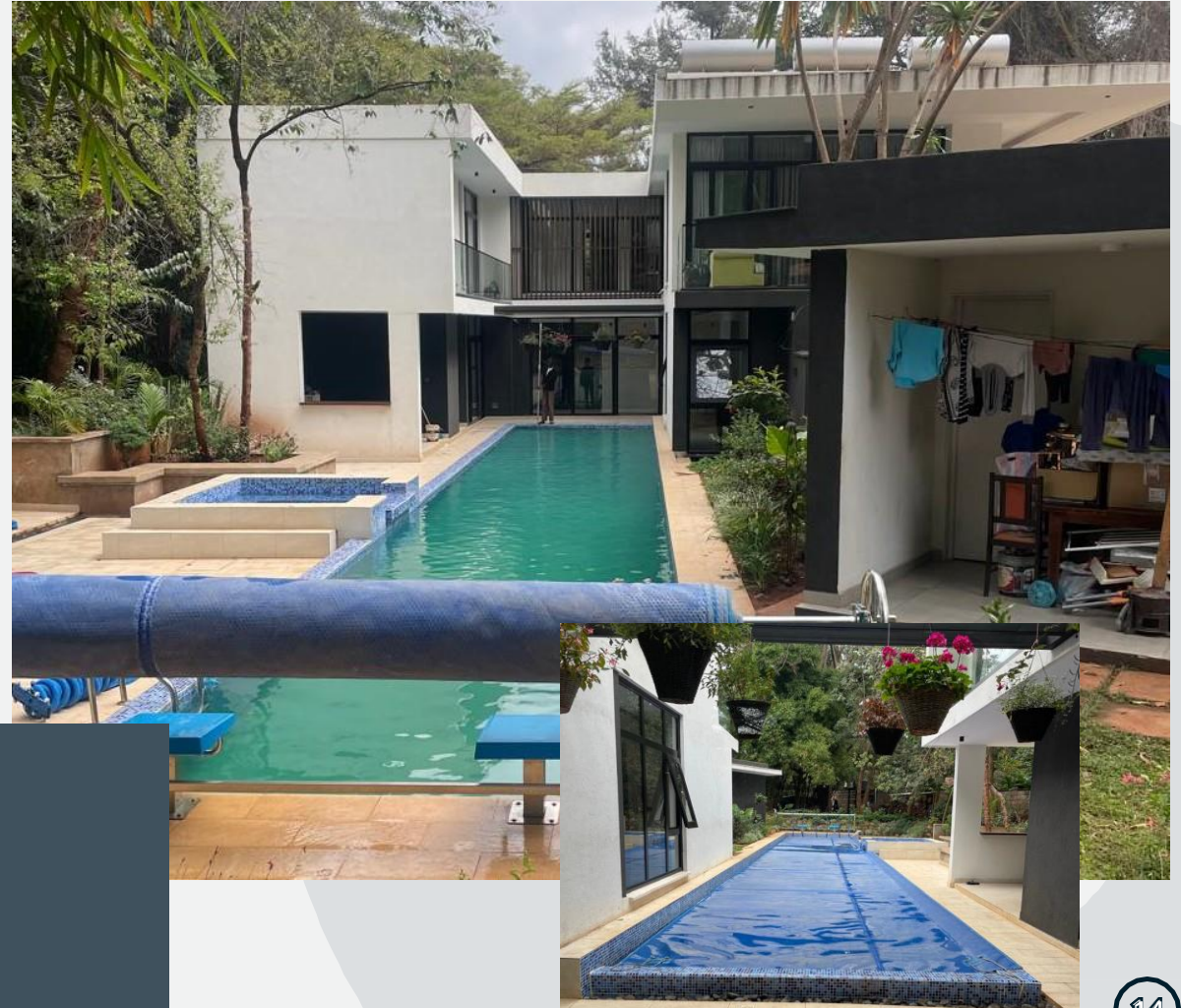
66

LAVINGTON

The residential home in Muhoya Lavington stands as a testament to modern architecture and sustainable living. This development not only enriches the lives of its occupants but also contributes to the overall character and vitality of the Muhoya Lavington community.

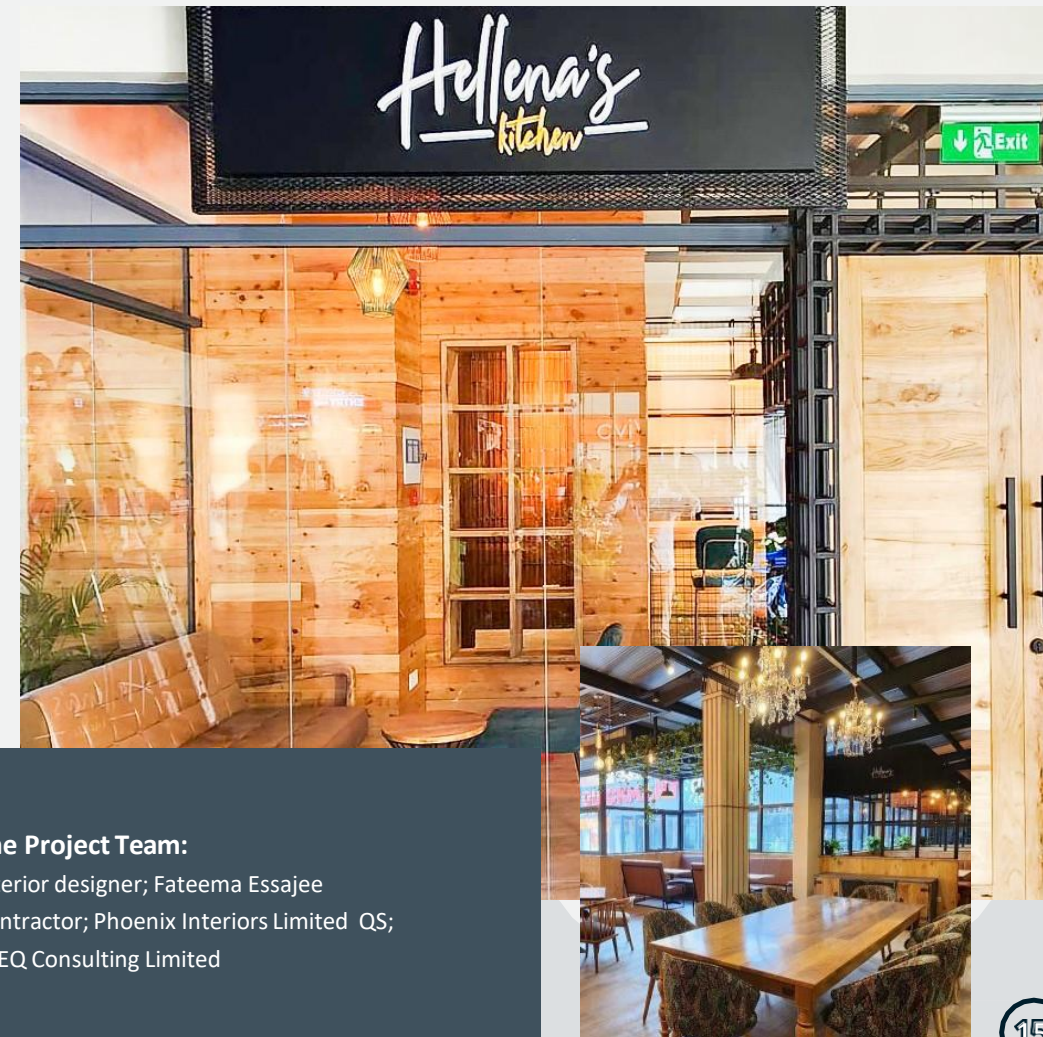
The Project Team:

Architect – Effect Architecture QS –
SPEQ Consulting Limited
Civil & Structural Eng – Arcis Engineers MEP Eng –
ACE Pristine Systems Contractor – Dumont
Enterprises Limited



HELLENA'S KITCHEN

Hellena's Restaurant, located in the heart of Kileleshwa along Mandra Road, is set to become a vibrant culinary destination within a mixed-use development that includes Quickmart Supermarket. The project involves the restaurant's fit-out which is designed to create a warm, inviting atmosphere that reflects its commitment to quality and community, making it a perfect spot for both casual dining and special occasions. The fit-out of Hellena's Restaurant embraces a modern yet cozy aesthetic, featuring a design that balances contemporary elements with local cultural influences. The layout has been thoughtfully planned to accommodate both intimate dining experiences and larger gatherings, ensuring versatility for various types of clientele.



The Project Team:

Interior designer; Fateema Essajee
Contractor; Phoenix Interiors Limited QS;
SPEQ Consulting Limited

ONGOING PROJECTS



WESTGATE

MALL EXTENSION

WESTLANDS

Westgate Mall Extension involves the construction of an extension to the mall and serviced hotels. This project is still ongoing.

The Project Team:

Architect; Bowman Architects Associates QS; SPEQ Consulting Limited

Contractor; Laxmanbhai Construction Limited

Structural Engineer – Civil Engineering Design (K Limited) MEP; Bosch East Africa Limited





1870 WEST WESTLANDS

1870 West is placed in Nairobi's second CBD and nearest hub to Nairobi's more affluent suburbs. Westlands is growing as an entertainment, hospitality and MICE destination, currently undergoing extended urban regeneration lending itself to renewed price and rental growth in the area

The Project Team:

Project Managers; LMJ Consultancy Ltd. Architect;
Bowman Associates
Civil & Structural Engineers; Metrix Integrated Consultancy QS; SPEQ
Consulting Limited
Mechanical & Electrical Engineers; Emplan Ltd.



COMPANY PROFILE



ONGOING PROJECTS

EVOQUE BY THE SEA

MOMBASA, NYALI

Evoque is a stunning architectural achievement featuring an exceptional range of luxury apartments with 1, 2, and 3 bedrooms available for sale in Nyali, recognized as the lifestyle hub of the Coast. Located by the beach in Mombasa, it offers uninterrupted ocean views, making it a valuable addition to your Kenya real estate portfolio.

**The Project Team:**

Architect; Bowman Architect Associates QS; SPEQ Consulting Limited

PM: LMJ Consultants Ltd

MEP; Gamma Delta Eastern Africa Limited Structural Engineer; Ngasi Consulting engineers

COMPANY PROFILE



ONGOING PROJECTS

KNP TOWERS

WESTLANDS

KNP Towers is a major mixed-use development project situated along Church Road in Nairobi's Westlands area. The development aims to create a modern, high-rise complex that blends office spaces and retail outlets units, strategically positioned to take advantage of the area's growing commercial and residential demand.

KNP Towers is set to meet the needs of businesses, residents, and shoppers seeking a central location with easy access to key amenities, transportation routes and Nairobi's central business district.



The Project Team:
Arch; Simple Architects
QS; SPEQ Consulting Limited MEP;
ARAW designs Limited
Structural; Integrated Metrix Limited

DAVIS & SHIRTLIFF

TATU CITY

To further enhance Davis & Shirliff operational capabilities and support the growing demand for its products, Davis & Shirliff is embarking on an exciting project to construct a warehouse and go-down at Tatu City. The go-down will feature advanced steel works, ensuring durability and optimal functionality.

The Project Team:

Architect; Boogertman Partners QS; SPEQ Consulting Limited Mechanical Engineer; Bosch Kenya Contractor; Ark Construction



RETREAT CENTRE NGONG

The Ngong Retreat and Rehabilitation Centre is an ambitious project aimed at creating a serene environment for healing, reflection, and personal growth. Nestled in the picturesque Ngong, this centre will serve as a sanctuary for individuals seeking recovery and rejuvenation from various life challenges, including mental health issues, addiction and emotional distress

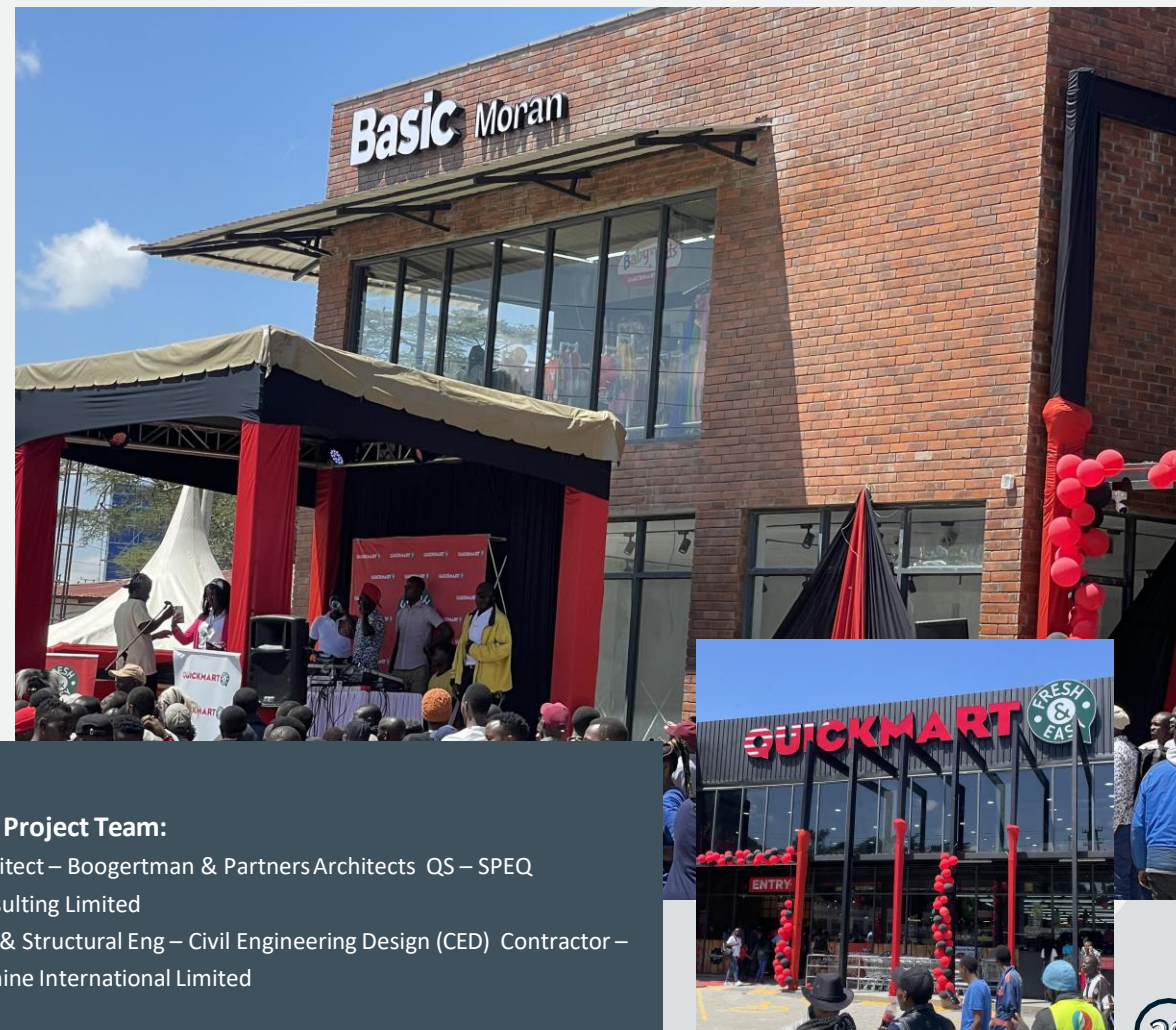


The Project Team:

Architect; JK Consultancy
Structural Engineers; Oville Associates QS;
SPEQ Consulting Limited
Contractor as Esteel Construction limited

BASIC MORAN NAROK

Welcome to Basic Moran Mall, a transformative project located in the heart of Narok County. Designed to serve as a vital resource for the local community, Basic Moran Mall offers residents a convenient and comprehensive shopping experience, providing access to essential goods and services all under one roof. This vibrant marketplace reflects the needs of a growing rural town in the stunning Rift Valley, creating a hub where convenience meets community.



The Project Team:

Architect – Boogertman & Partners Architects QS – SPEQ

Consulting Limited

Civil & Structural Eng – Civil Engineering Design (CED)

Contractor – Illumine International Limited

KIJANI RIDGE TATU CITY

This project not only envisions the development of modern and aesthetically pleasing construction ideas but also portrays a nestle identity among the Kijani Ridge community. The project is still ongoing and is situated in Kijani Ridge at Tatu City.

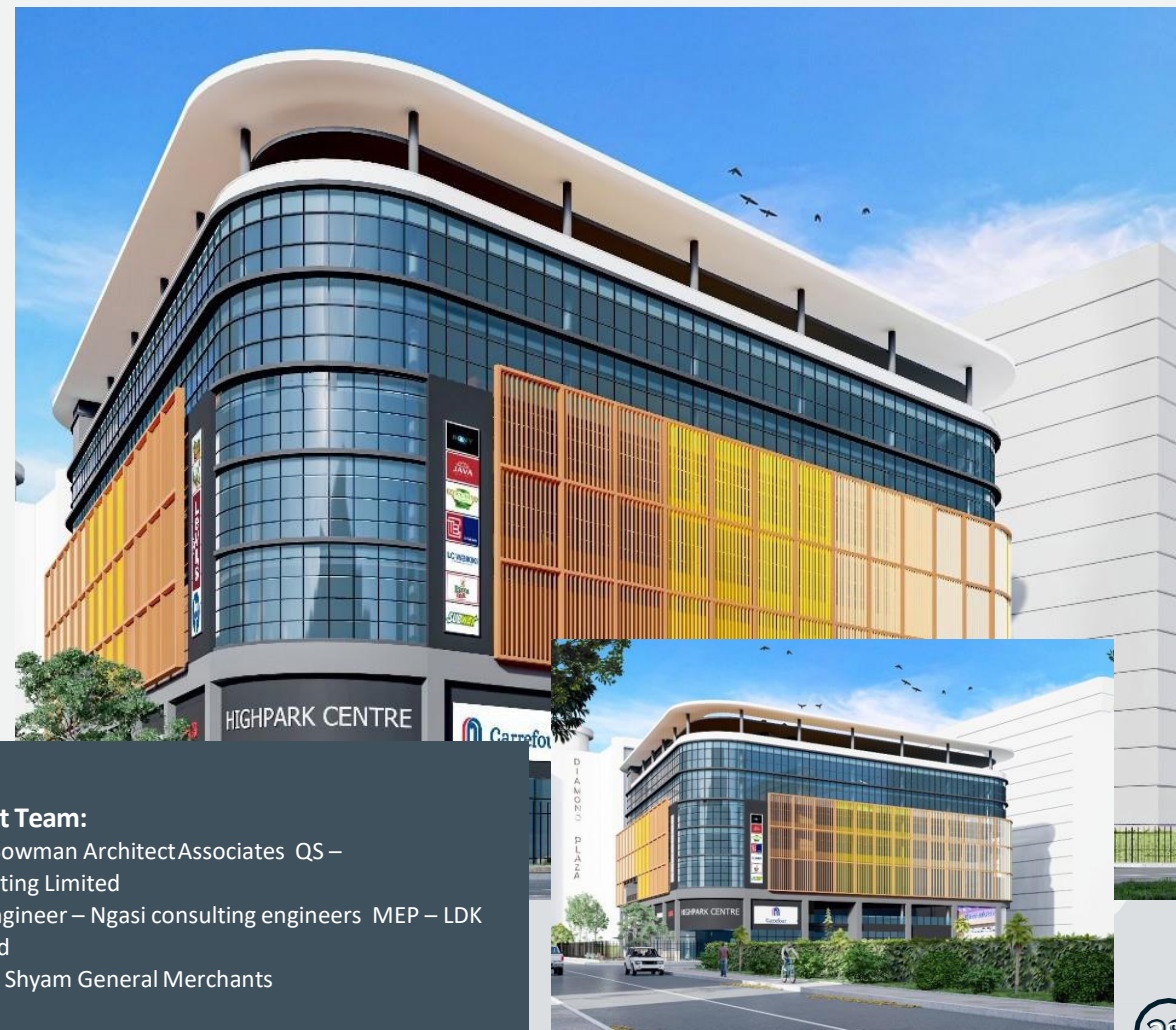
The Project Team: Architect; J.K
Consultancy QS; SPEQ Consulting
Limited
Contractor; Ashler Build Limited



HIGHPARK TOWERS

PARKLANDS

Highpark Towers stands as a significant addition to the Parklands skyline, representing a mixed-use development entity. This project aims not only to enhance the living experience for residents but also contributes to the economic and social vitality of the area. We are proud to work hand in hand to ensure this vision is brought to life and look forward to its positive impact on the community for years to come.



The Project Team:

Architect – Bowman Architect Associates QS –
SPEQ Consulting Limited
Structural Engineer – Ngasi consulting engineers MEP – LDK
Africa Limited
Contractor – Shyam General Merchants

PLAINSVIEW HOSPITAL

RUIRU

The ongoing construction is of Plansview Hospital, a cutting-edge Level 4 healthcare facility dedicated to serving the community with comprehensive medical services. Plansview Hospital is designed to stand out having incorporated all the necessary modern building techniques

to ensure that it offers extensive and satisfactory services to the patients and the community. We look forward to the completion of this project.



The Project Team:

Architect – JK Consultancy

QS – SPEQ Consultants Limited

Civil & Structural Eng – Arctis Engineers MEP

Eng – ACE Pristine Systems

BASIC D'PRITT

DENNIS PRITT

This ongoing project that involves the construction of a convenience mini-mall situated along Dennis Pritt Road Nairobi marks a significant milestone in enhancing local retail offerings. The project is ongoing and not only aims to meet the needs of the community but also establishes a vibrant shopping hub anchored by Quickmart Supermarket. We look forward to seeing this minimall thrive and serve the residents of Nairobi for years to come.



The Project Team:

Architect – Boogertman & Partners Architects QS – SPEQ
Consulting Limited
Civil & Structural Eng – Civil Engineering Design (CED)



NGORONGORO TANZANIA

The development of a tourism resort in Ngorongoro presents a unique opportunity to create a high-quality, sustainable accommodation option that enhances the visitor experience while benefiting the local community and preserving the environment. This project aligns with global trends towards

eco-tourism and sustainable travel, positioning Ngorongoro as a premier destination for discerning travelers. By investing in this project, we contribute to the conservation of one of the world's most iconic landscapes while promoting responsible tourism.



The Project Team:

Architect; 2802 Professional Architects (Pty) Limited QS; SPEQ Consulting Limited
Civil Engineer; Oville Associates Limited
Electrical Engineer; I-MEP Integrated MEP Limited Mechanical engineer; I-MEP Integrated MEP Limited



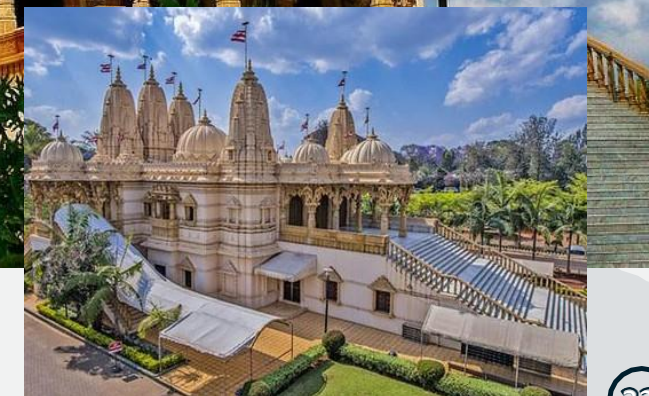
MANDAL TEMPLE

EAST AFRICA SATSANGS
WAMINARAYAN TEMPLE

The Mandal Temple, a revered site known for its rich history and architectural beauty, is set to undergo a comprehensive renovation aimed at restoring its structural integrity and enhancing its cultural significance. This project not only seeks to preserve the temple's unique heritage but also to create a welcoming space for worship and community gatherings. It is located along Laxminaryan road just off Parklands road.



The Project Team: Architect;
Simple Architects QS; SPEQ
Consulting Limited MEP: ARAW
Design limited



LYCÉE FRANÇAIS DENIS DIDEROT (LFIDD)

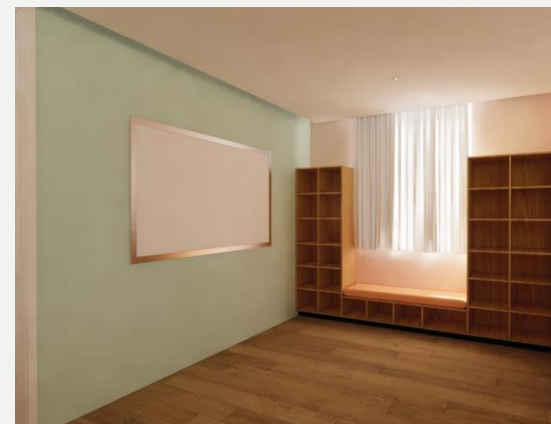
Lycée Français Denis DIDEROT (LFIDD) undertook an exciting project to enhance its facilities, focusing on the renovation of the gym and library. This revitalization not only improves the school's infrastructure but also enriches the educational experience for its diverse student body.

The upgraded gym provides a modern space for physical education and sports, promoting health and teamwork, while the renovated library offers a welcoming environment for study and exploration, supporting the school's commitment to academic excellence.

**The Project Team:**

Contractor; Visaru Construction Architect;
Munkh Architecture + Design QS; SPEQ Consulting
Limited
PM: Edifice Management Ltd

COMPANY PROFILE



ONGOING PROJECTS

MODULAR EPZ

The construction of a cutting-edge go-down for Modular Real Estate Ltd. at Athi River is poised to redefine industrial logistics within the Export Processing Zone (EPZ). Focused primarily on robust steel works, this project is designed to provide a durable and efficient storage solution tailored to the diverse needs of modern businesses

The Project Team:

Architect; Munkh Architecture + Design QS;
SPEQ Consulting Limited Mechanical Engineer;
Bosch Kenya Contractor; Pragati Builders Limited
Project Manager: Tower Cost



GATH RIVERSIDE RETAIL RIVERSIDE

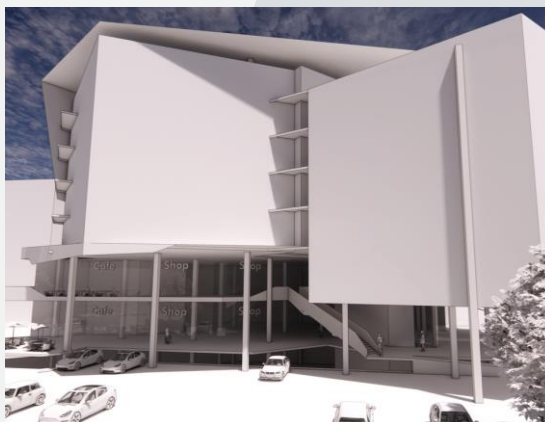
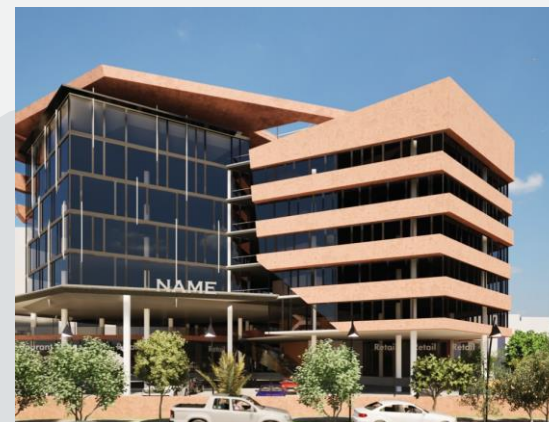
This project involves the construction of a convenience building with various amenities from co-working office spaces to a supermarket and shops that present their various services to the customers.

The Project Team:

Architect; Boogertman and partners QS;
SPEQ Consulting Limited Structural Engineer
; Gath Kenya Mechanical Engineer: Gamma
Delta
Project Manager: LMJ Consultancy Limited



COMPANY PROFILE



ONGOING PROJECTS

LANGATA ROAD OFFICE BLOCK LANGATA

The proposed office block development on Langata Road is designed to create a modern, functional workspace that meets the needs of businesses in Nairobi. Strategically located in a bustling commercial area, this project aims to provide high-quality office spaces equipped with the latest amenities, fostering productivity and collaboration for tenants.



The Project Team:

Architect; Design Assembly Ltd QS;
SPEQ Consulting Limited
Structural Engineer; Abba Waddu Ltd MEP; Gamma
Delta Eastern Africa Limited

JUNIOR SCHOOL

PARKLANDS BAPTIST CHURCH

Junior School involves the construction of a junior school in Westlands at Parklands Baptist Church. The school is an extension of the current school aimed to accommodate more students and introduce further learning. This project was completed and the building occupied.

The Project Team:

Architect; Herricks and Ken Rapando
Project Manager: QS; SPEQ Consulting Limited QS; SPEQ
Consulting Limited
Contractor; Mountain Home



PA AMANI RESIDENCE NAIVASHA

Nestled in the middle of the game park in Naivasha, along the Great Rift Valley Lodge and fronting Lake Naivasha, is the PA Amani luxurious residence. A complete experience with state-of-the-art facilities for a complete holiday stay.

The Project Team:

Architect – John Msafiri

Civil & Structural Eng - Inhouse QS –

SPEQ Consulting Limited

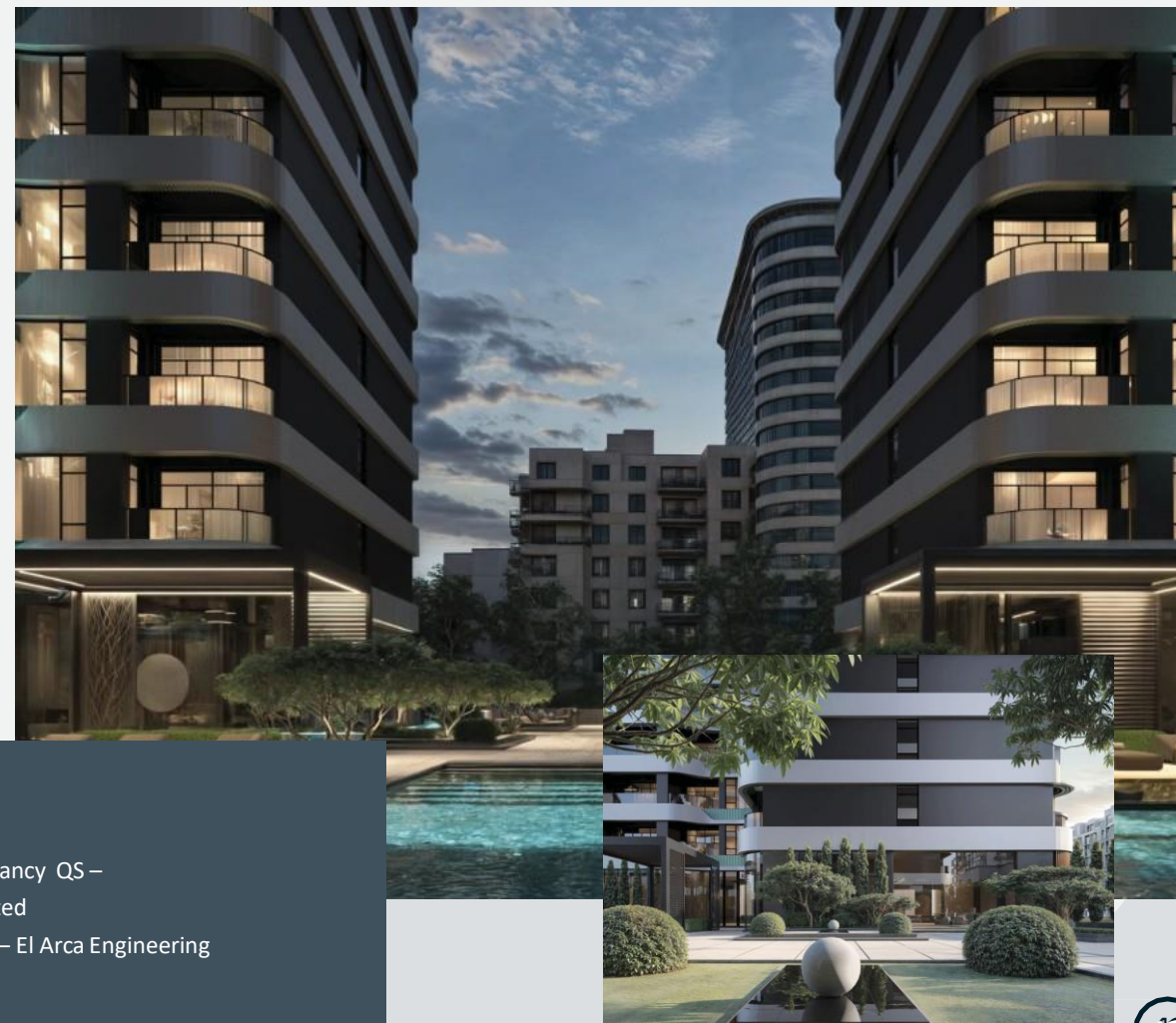
Contractor – Illumine International Limited



EMERALD SPRINGS WESTLANDS

Emerald Residences features modern one- and two-bedroom apartments with smart home technology and premium finishes. Residents enjoy private balconies, breathtaking views, luxurious courtyards, a large swimming pool, fully fitted gym, spa/sauna, and café. Additional amenities include

a children's play area, residence lounge, and concierge reception, offering luxury and convenience in every detail.



The Project Team:

Architect – JK Consultancy QS –
SPEQ Consulting Limited
Civil & Structural Eng – El Arca Engineering

COMPANY PROFILE



ONGOING PROJECTS

DIRECTORS

**QS. Wilson Gachanja, PMP**

Over 13 years' experience in both the contracting and consulting disciplines with a thorough understanding of the East African region, its culture and working environment and able to strike a balance between best practice and practical application. Registered Quantity Surveyor (Reg. No. Q833) – Board of Registration of Architects and Quantity Surveyors. A member of Project Management Institute (PMI) (Reg. No 7419534) and the Institute of the Quantity Surveyors of Kenya (IQSK) (Reg. No. 512).

**QS. Kenneth Kimathi**

Over 14 years working experience in the Kenyan and East African Construction Industry. Registered Quantity Surveyor (Reg. No. Q783) – Board of Registration of Architects and Quantity Surveyors. A Corporate member of the Institute of the Quantity Surveyors of Kenya (IQSK) (Reg. No. 549). Handled a wide range of projects in various sectors of the construction industry ranging from Hospitality, Offices, Health, Education, Residential, Retail and Industrial sectors.

COMPLIANCE



OUR PARTNERS





- 📍 Valley View Office Park, 6th Floor
- ✉ info@speqconsulting.com
- ☎ +254 722 415 310 +254 726 541 625